

TOPPING

foobar2000

The Settings of Foobar Player

Version 2.0 or earlier

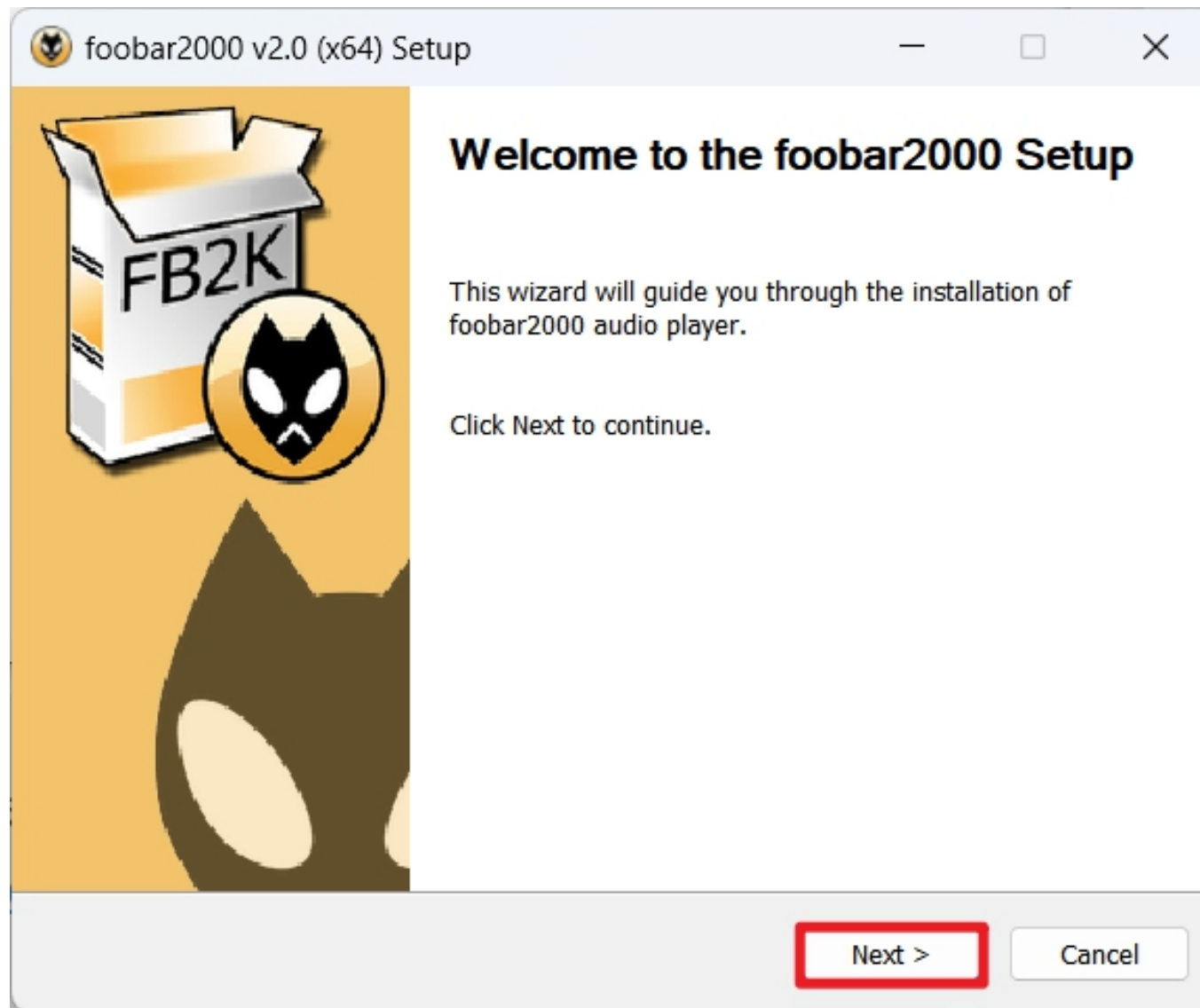
Guangzhou TOPPING Technology co., LTD

1 INSTALL FOOBAR2000 PLAYER.

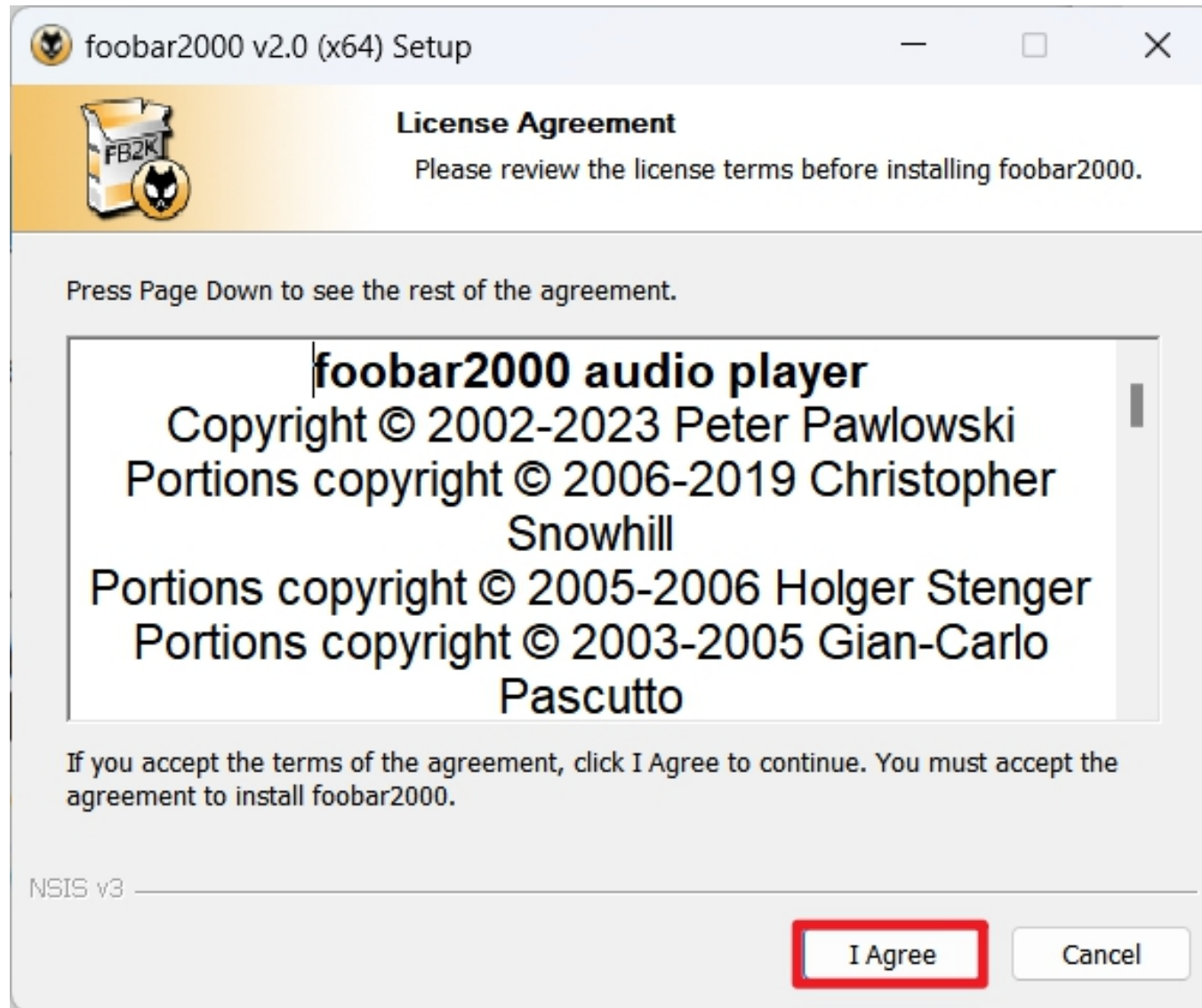
You need to install a Foobar2000 player. If you already have, skip this step.

Run the installation, click "Next" to the next step.

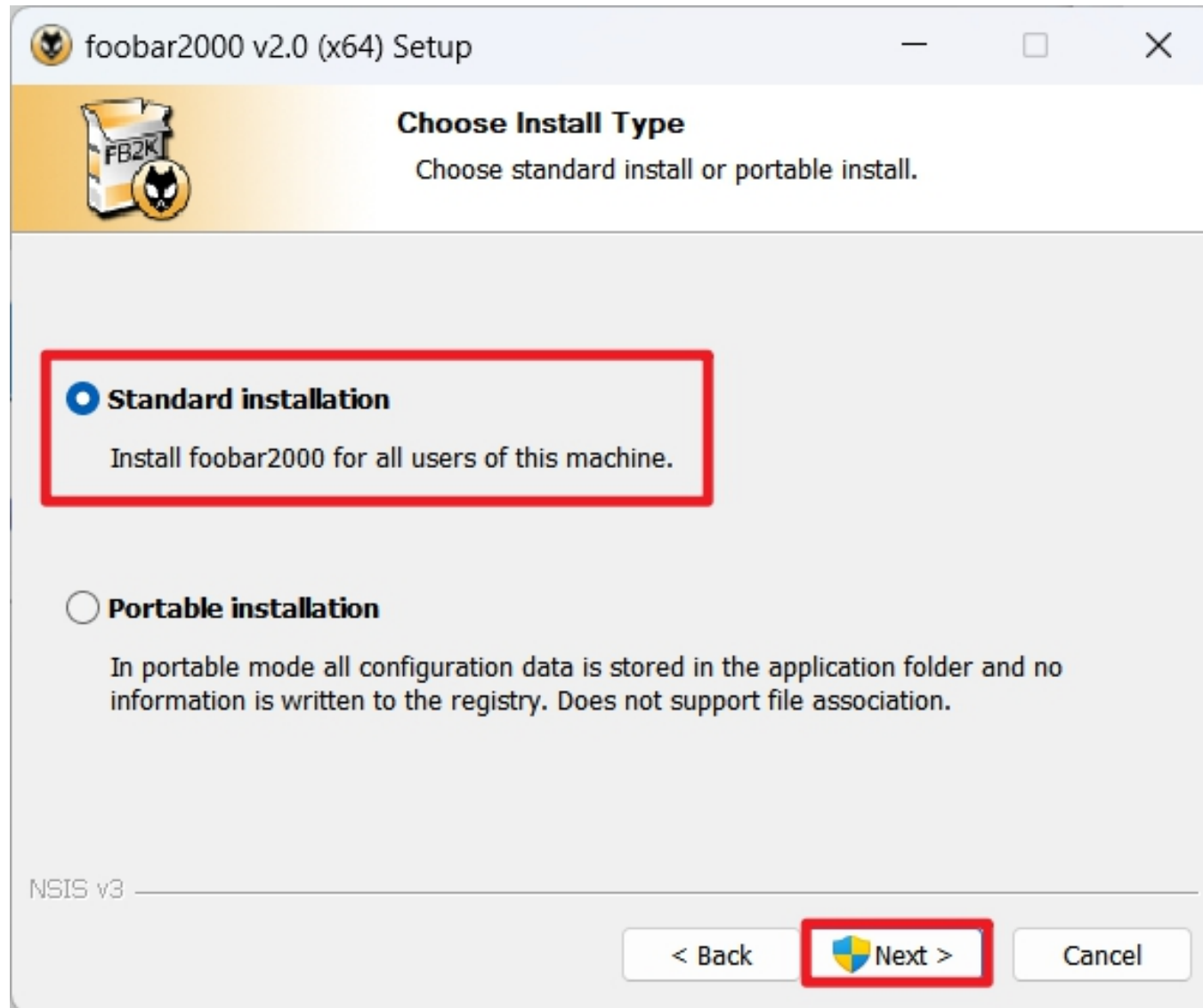
(You can download Foobar2000 player at <http://www.foobar2000.org/download>)



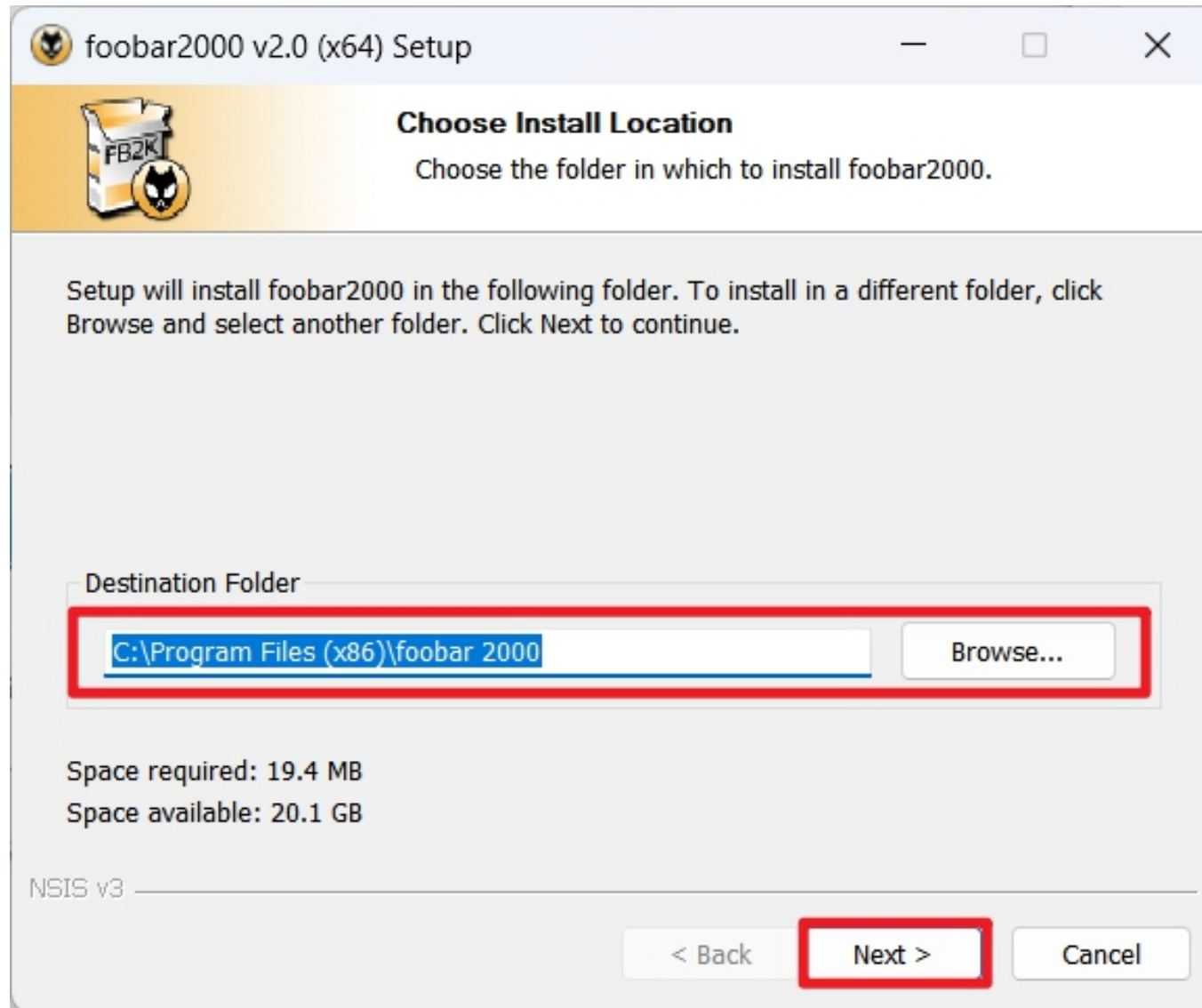
Click "I Agree".



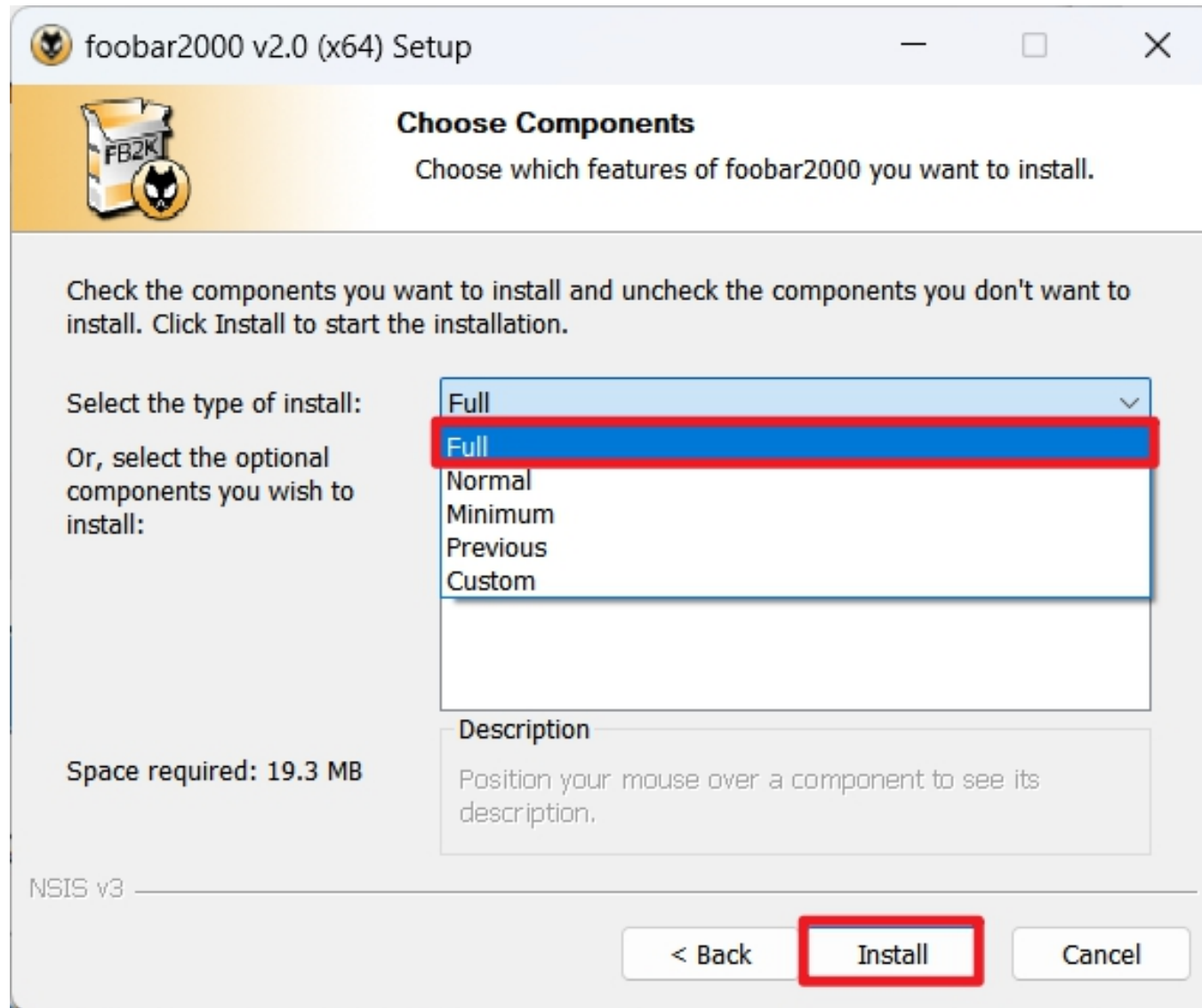
Select the "Standard installation", click "Next".



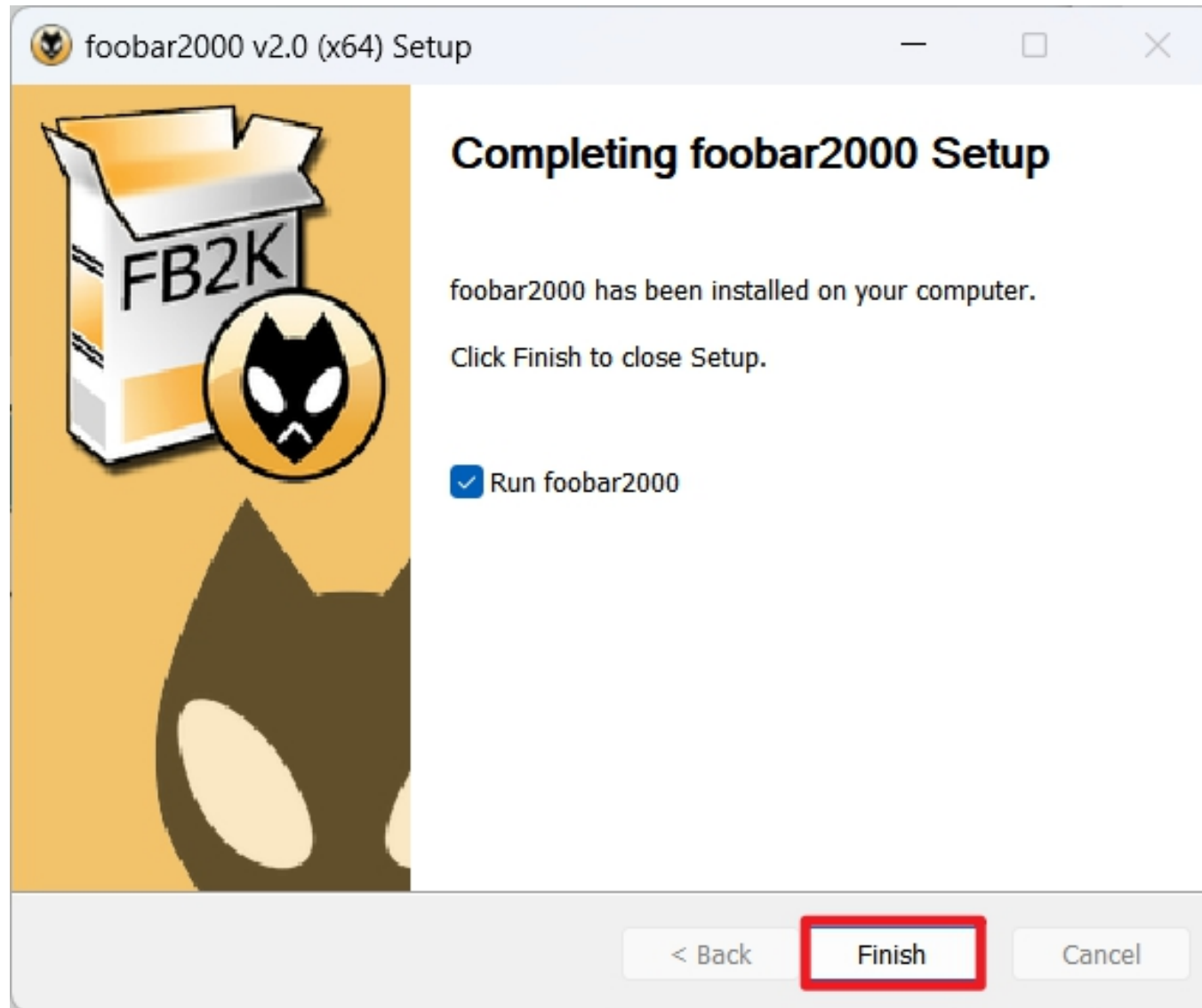
Choose install location, click "Next".



Select "Full", click "Install".

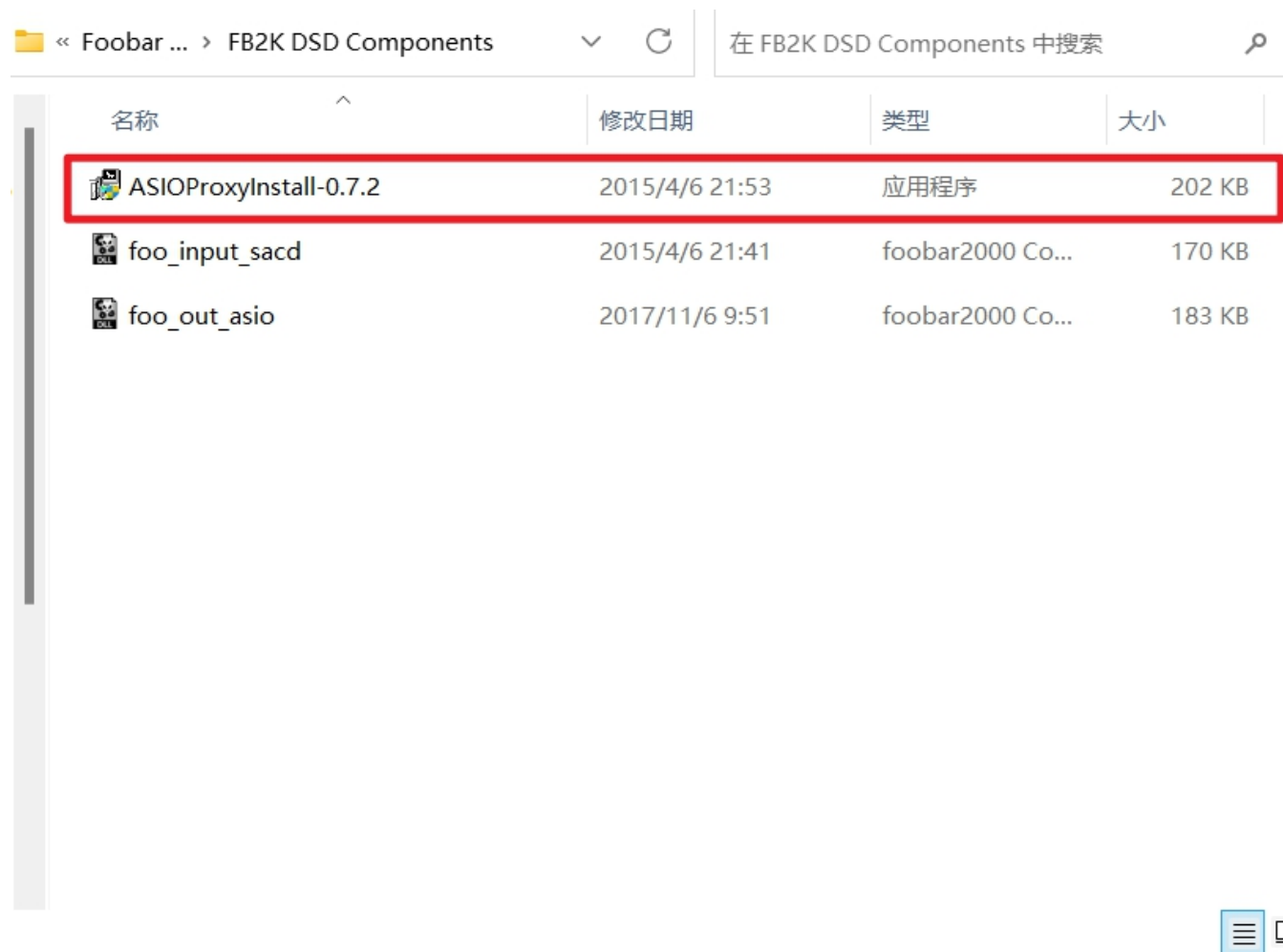


Click "Finish" to complete the installation.

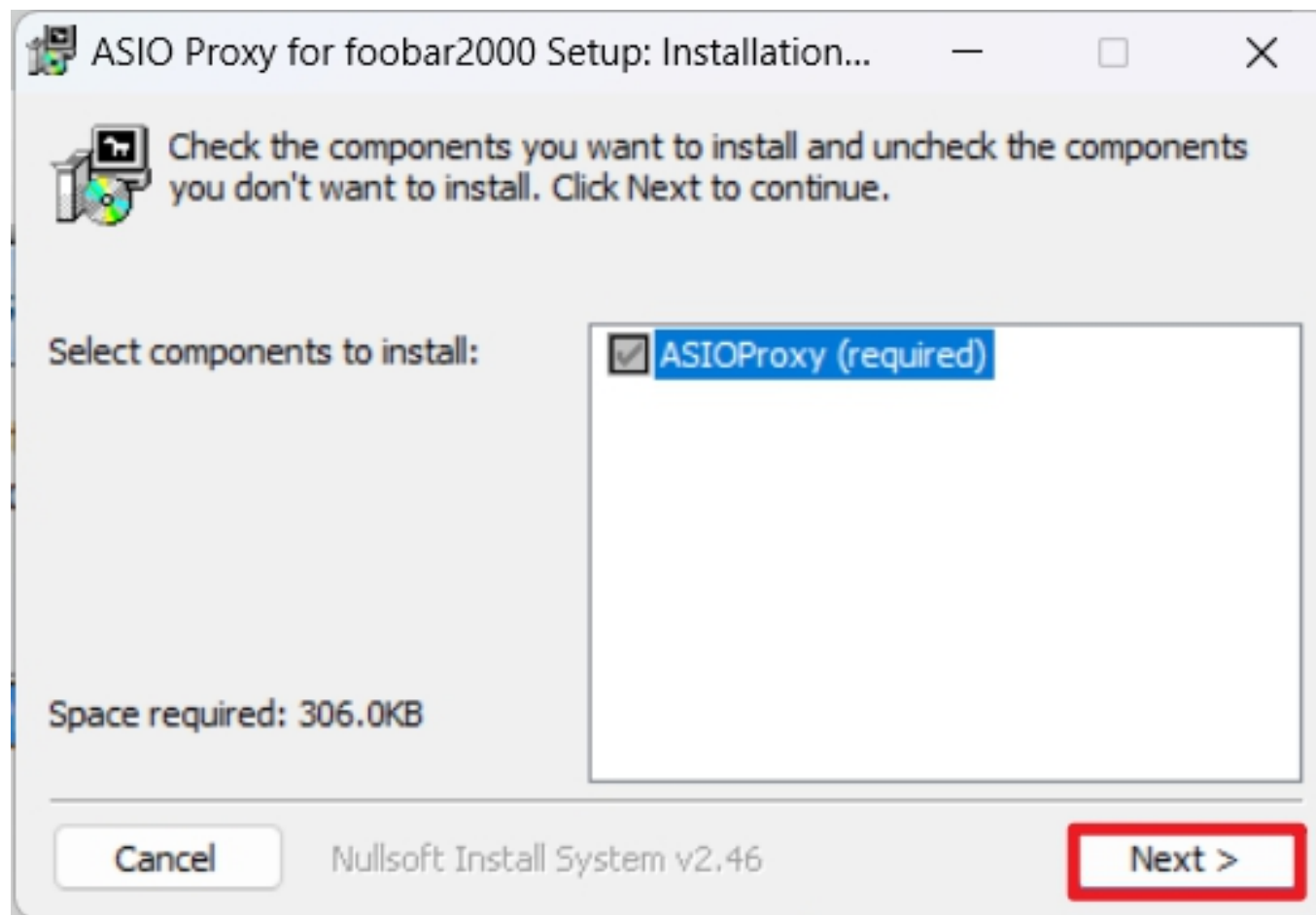


2 FOOBAR2000 DSD PLAYBACK SETTINGS

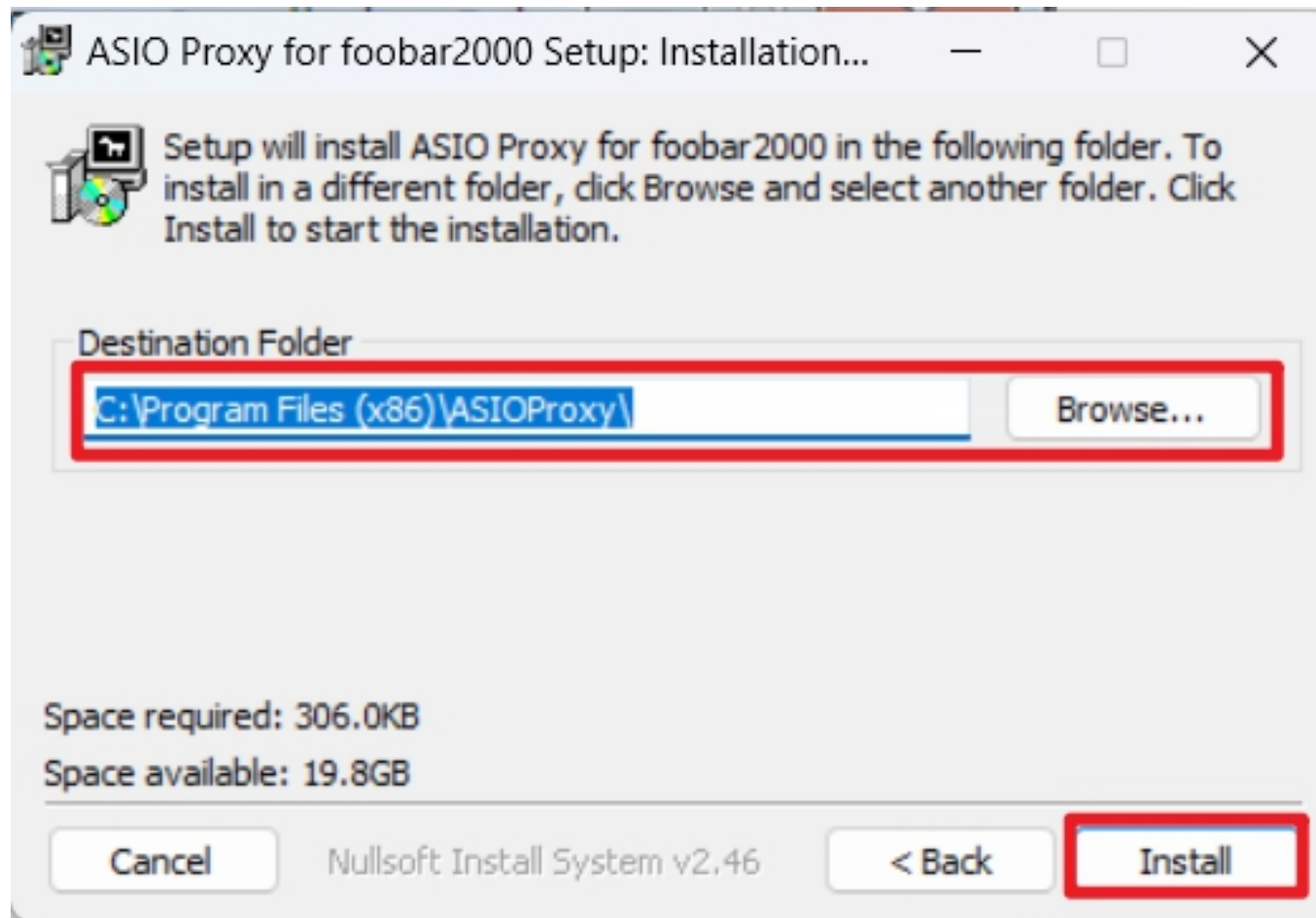
Run "ASIOProxyInstall-0.7.2.exe" at "FB2K DSD components" folder .



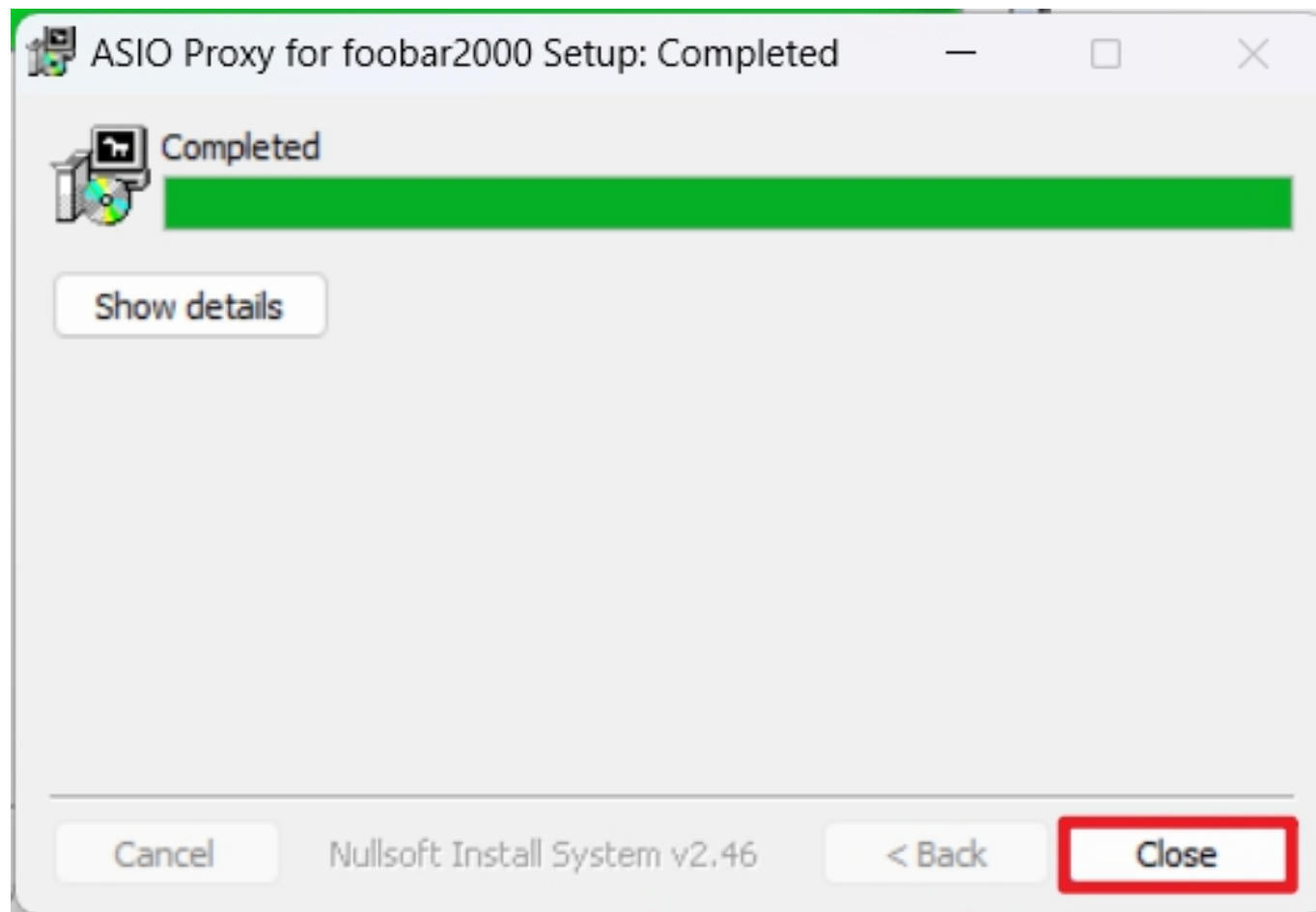
Click "Next".



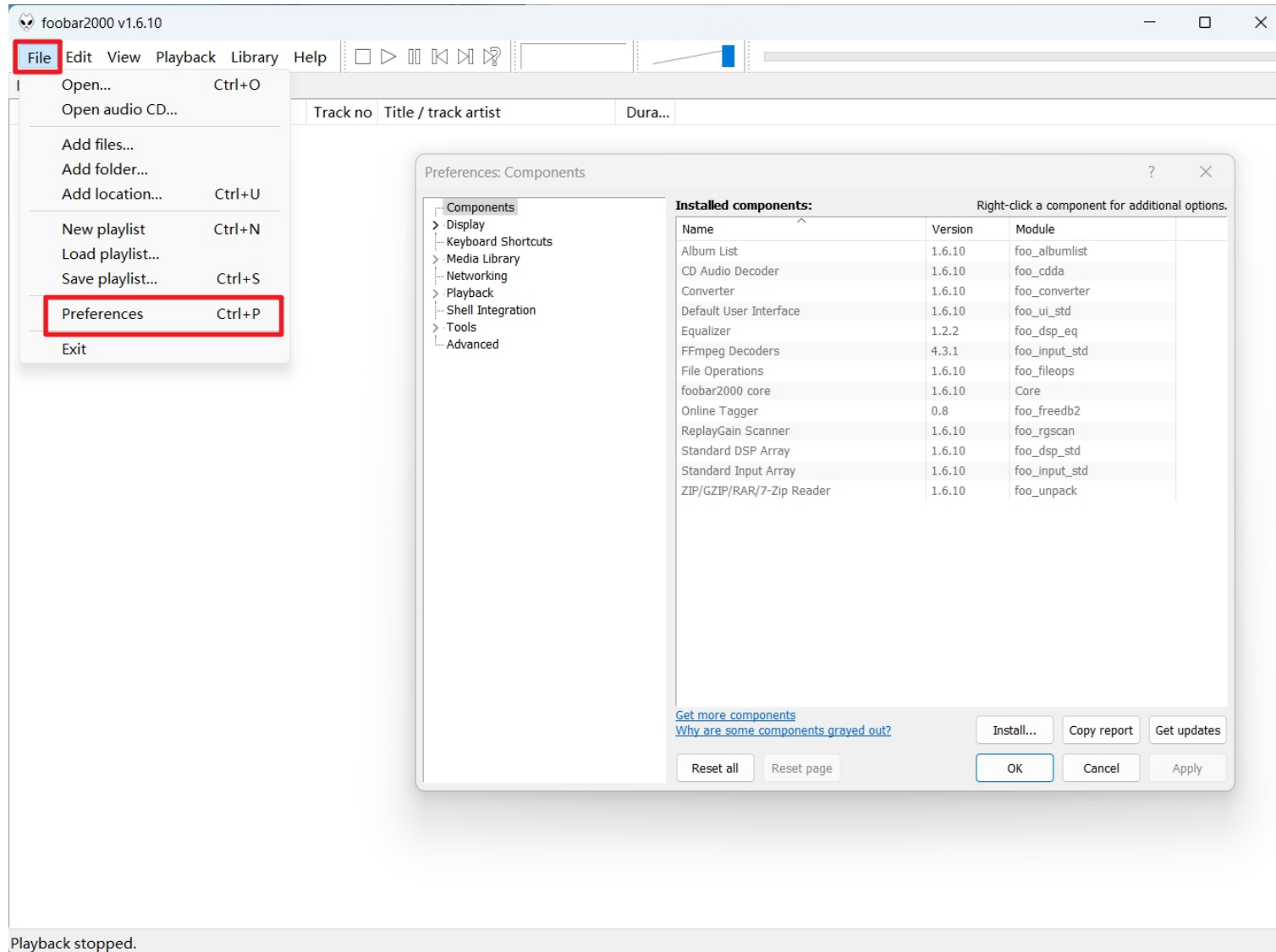
Select installation location and click "Install".



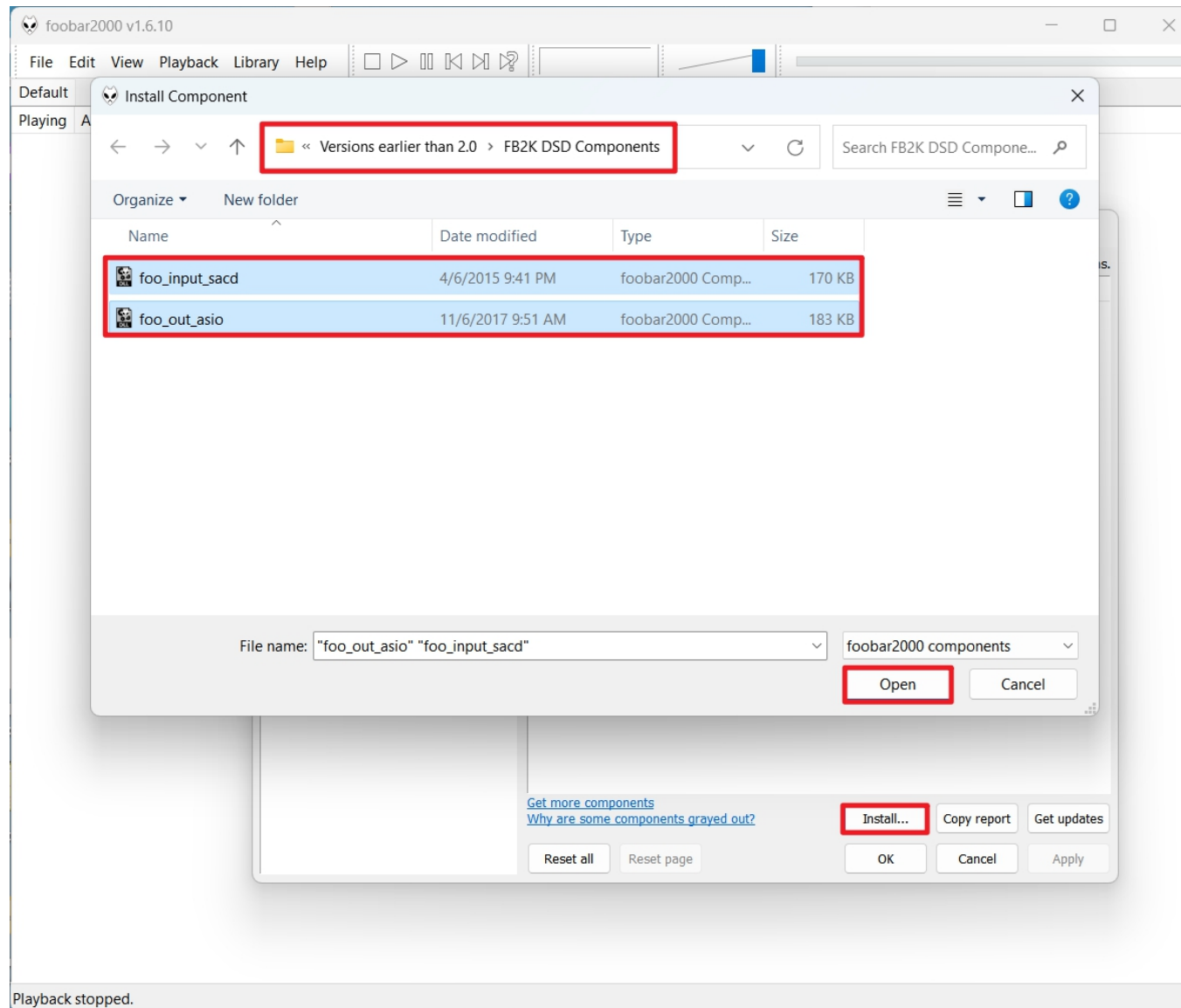
Click "Close" to complete the installation.



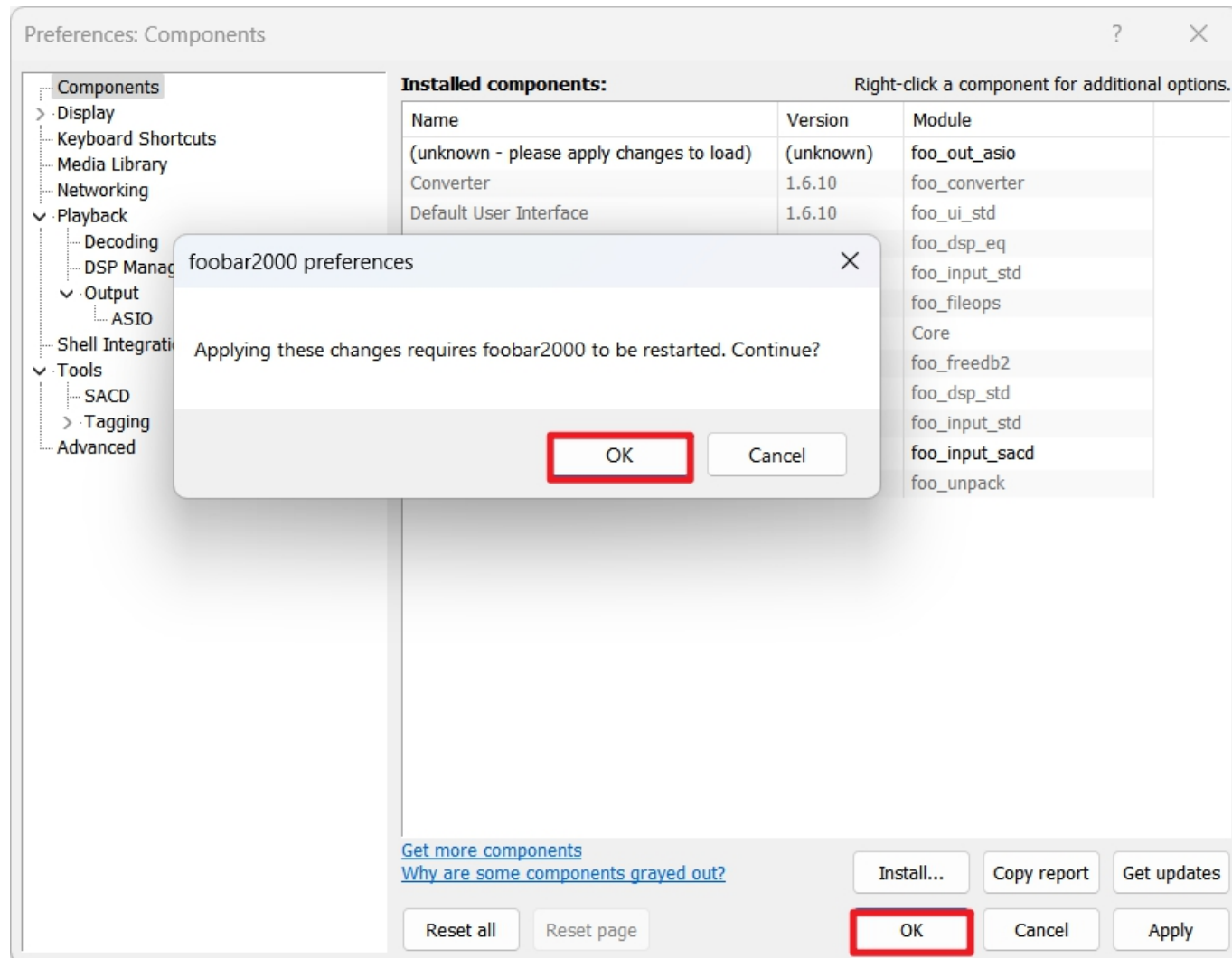
Run foobar2000 player, click "File"→"Preferences" to open this window.



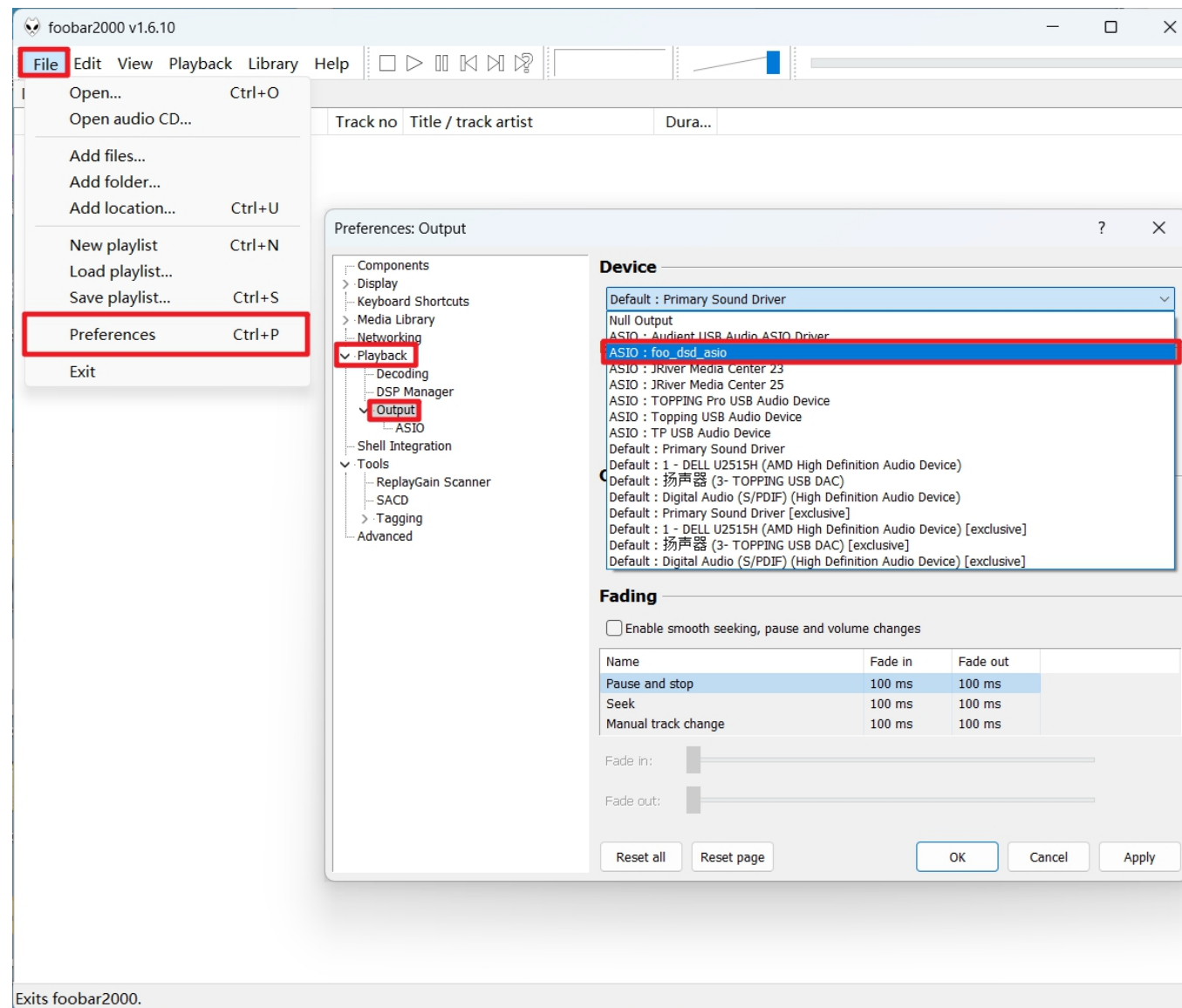
Now you need to install 2 components. Click "Install..." and find "foo_input_sacd.fb2k-component" and "foo_out_asio.fb2k-component" in folder "FB2K DSD Components", click "Open".



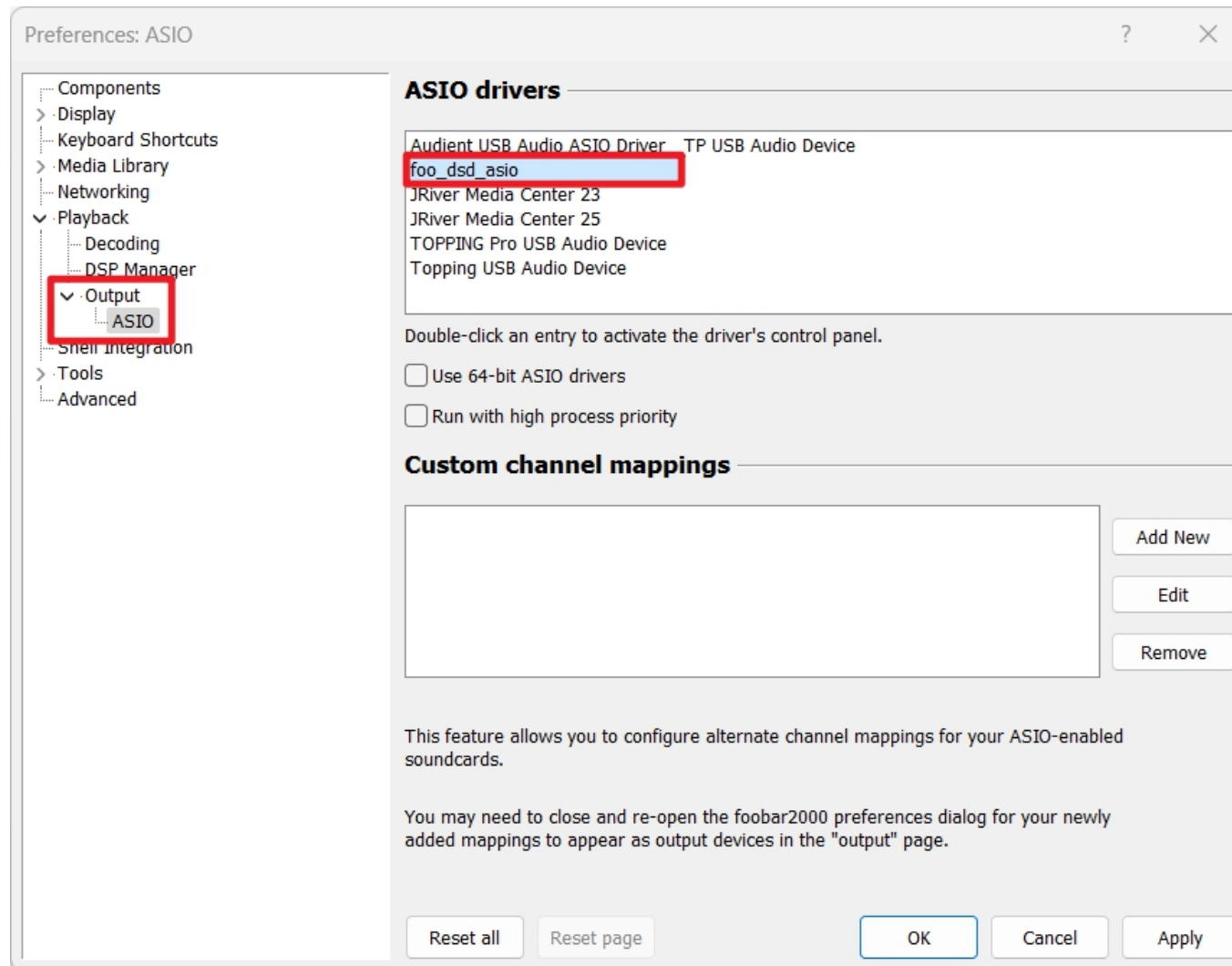
Click "OK", then Foobar2000 player will restart.



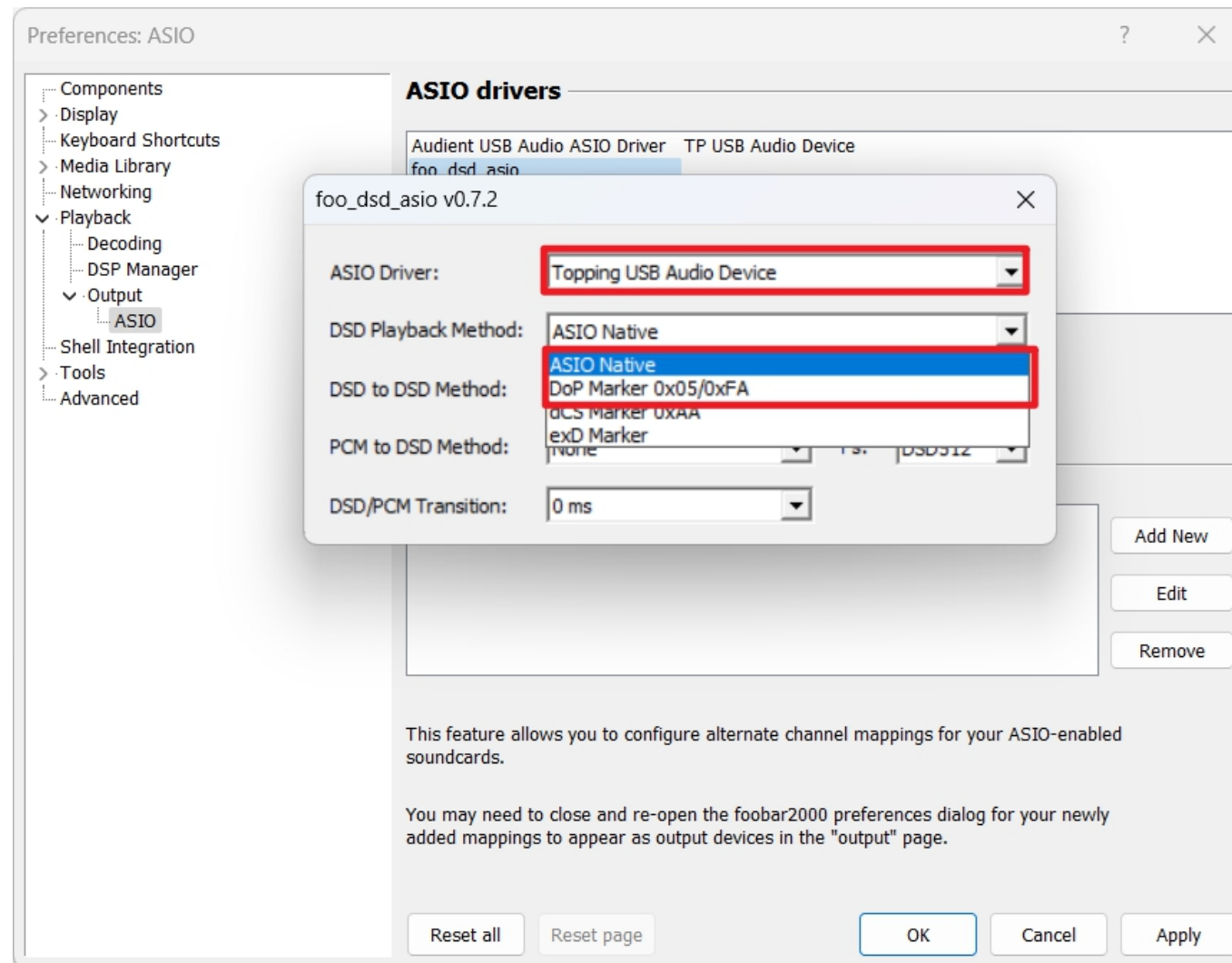
Wait for restart of Foobar2000 player and then click "File"→"Preferences"→"Playback"→"Output"; choose "ASIO+DSD: foo_dsd_asio" on "Device".



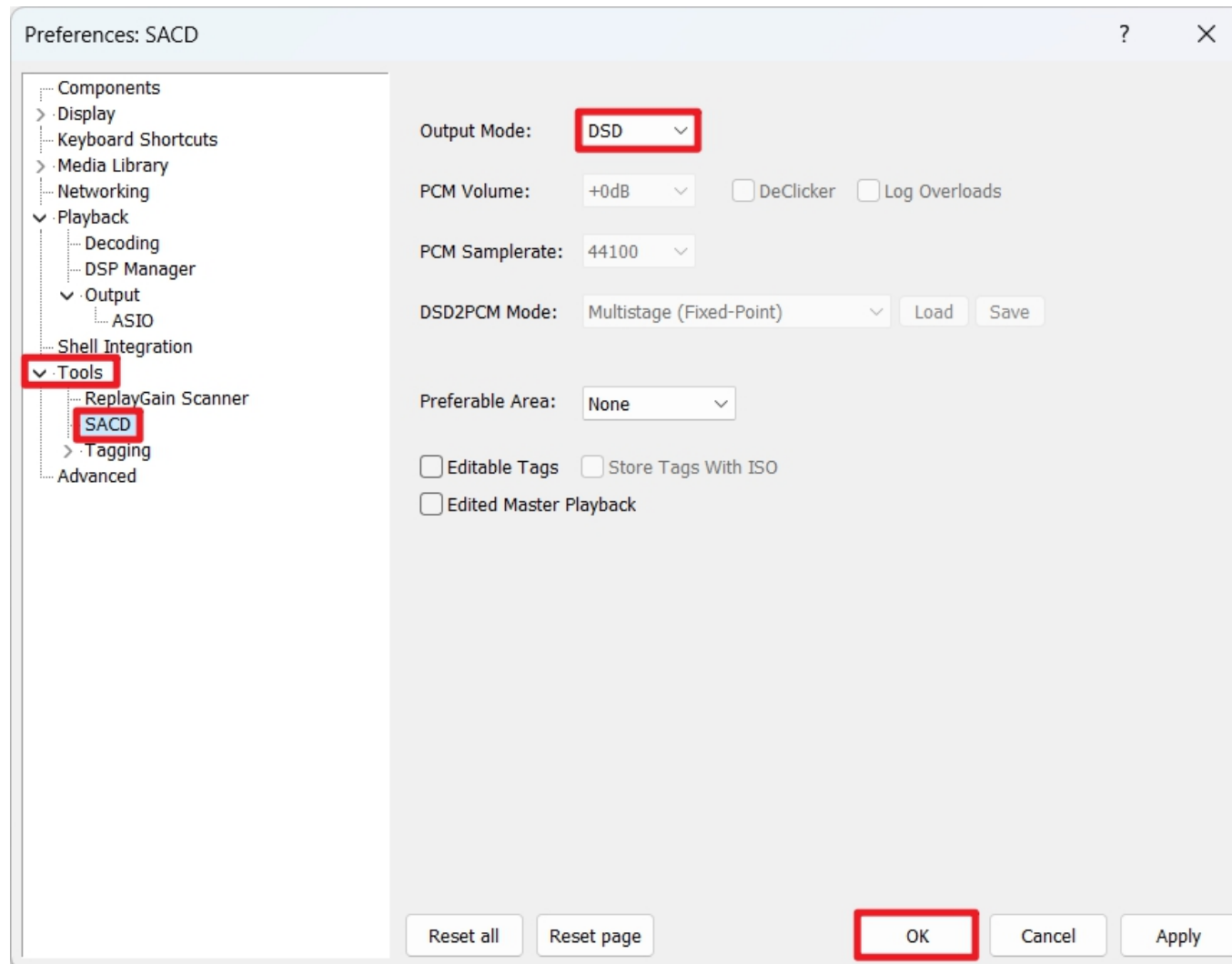
Click "ASIO+DSD", and then double-click on "foo_dsd_asio" in "ASIO drivers".



Select "Topping USB Audio Device" at ASIO drivers and select your favorite DSD playback method, ASIO Native or DoP Marker 0x05/0xFA.



After that, click "Tools"→"SACD", choose "DSD" in "Type", click "OK" to complete the setting of Foobar2000 player.
End.



foobar2000

The Settings of Foobar Player

Version 2.0 or earlier

Guangzhou TOPPING Technology co., LTD