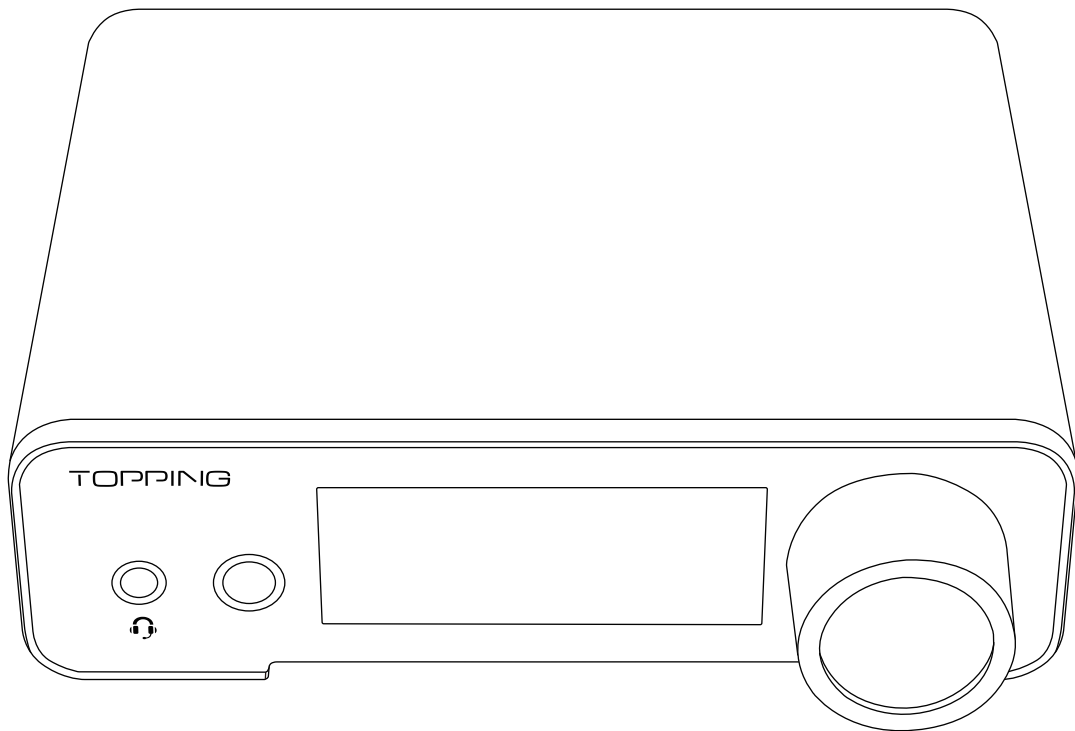


TOPPING

DX111



Model: TP546
V1.0

User manual

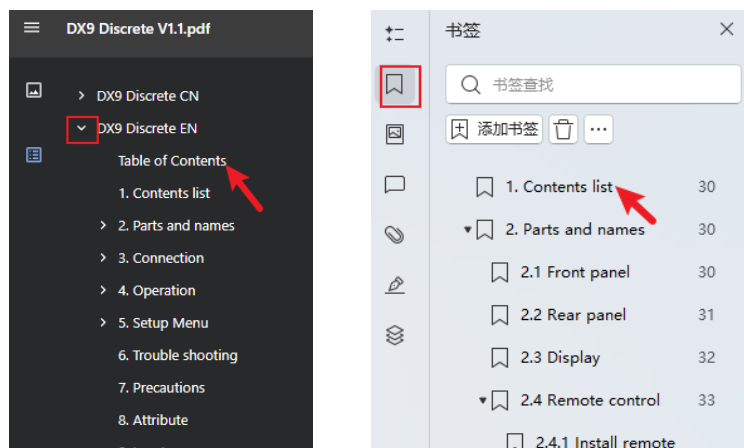
Manual Reading Guide

Jump to target section (image for reference only)

- Click any item in the table of contents to navigate to the corresponding part.

Table of Contents	
1. Contents list	3
2. Parts and names	3
2.1 Front panel	3
2.2 Rear panel	4
2.3 Display	5
2.4 Remote control	6
3. Connection	8
3.1 Connect to the input source	8

- The table of contents on the left side of your browser or document editor shows the full structure of this manual; click any item to go directly to that chapter.



Keyword search

- Windows: Press Ctrl + F to search for keywords.
- Mac: Press Command + F to search for keywords.

Table of Contents

1. Package contents	4
2. Parts and names	4
2.1 Front panel	4
2.2 Display	5
2.3 Rear panel	6
2.4 Remote control	7
3. Connection	8
3.1 Connect input source and power	8
3.2 Optical output	9
3.3 Connect to a power amplifier or active speakers	10
3.4 Connect headphones / headset	11
4. Operation	12
4.1 Power on / standby	12
4.2 Volume settings	12
4.3 Input selection	13
4.4 Output selection	14
4.5 Headphone gain	14
4.6 How to set DAC mode	15
5. Setup menu	15
5.1 Auto standby & wake-up	16
5.2 Brightness	16
5.3 PCM filter	16
5.4 Remote control	17
5.5 Output selection	17
5.6 DAC mode	17
5.7 Headphone gain	18
5.8 PEQ selection	18
5.9 Optical compatibility	18
5.10 Optical output PEQ Follow	19
5.11 Optical output volume setting	19
6. Factory reset	19

6.1 Reset all settings (excluding PEQ config)	19
6.2 Reset PEQ config only	20
7. Firmware Upgrade	20
8. Precautions	20
9. Trouble shooting	20
10. Attribute	21
11. Input range	22
12. Specifications	23

1. Package contents

DX1 II	x1
RC15C Remote control	x1
USB A-C cable	x1
USB C-C cable	x1
Product information card	x1

Windows Driver download: <https://www.toppingaudio.com/supports?search=DX1+II&tab=drivers-software>

2. Parts and names

2.1 Front panel



- 1. 3.5mm headphone / headset jack**
3.5mm TRRS jack with 2.5V bias voltage, compatible with headphones or CTIA-standard headsets.
- 2. 4.4mm balanced headphone output jack**
- 3. Remote control receiver**
- 4. Screen**
- 5. Multifunction knob**

2.2 Display



1. **DSD format indicator**

Lights up when playing DSD. Off when playing PCM.

2. **Input channel indicator**

Displays the current input channel.

3. **Headphone gain indicator**

Lights up in high-gain mode. Off in low-gain mode.

4. **PEQ configuration display**

Shows the currently selected PEQ configuration.

5. **Output channel indicator**

LO: Line Out (Rear panel 4.4mm output and RCA output)

Headphone icon: Headphone output (Front panel 3.5mm and 4.4mm headphone outputs)

LO and headphone icon lit simultaneously: Line Out and headphone output at the same time

6. **Sampling rate / volume display**

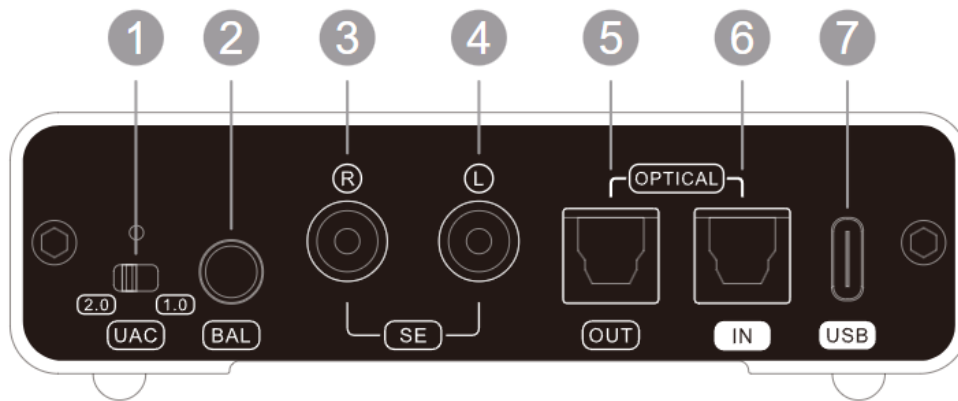
Normal status: Displays volume

When switching sampling rate: Displays current sampling rate, then returns to volume after 3 seconds

Mute status: "---" and the original volume value flash alternately

Special case: When the output channel is set to LO (Line Out output) and the decoding mode is set to -d (DAC mode), the display shows the sample rate

2.3 Rear panel



1. UAC mode switch

The USB input of this device supports USB Audio Class 1.0 / 2.0. The mode can be switched according to the connected device. UAC2.0 is recommended for general use. If connecting to devices that only support UAC1.0 (such as PlayStation), please switch to UAC1.0 mode. Note: After changing the setting, you need to reconnect the USB cable for the setting to take effect.

2. 4.4mm balanced stereo output

3. RCA single-ended output (Right)

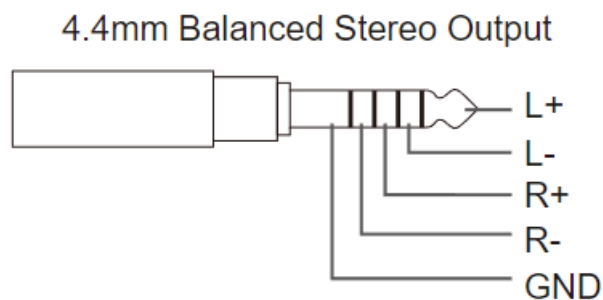
4. RCA single-ended output (Left)

5. SPDIF optical output

6. SPDIF optical input

7. USB input & power input

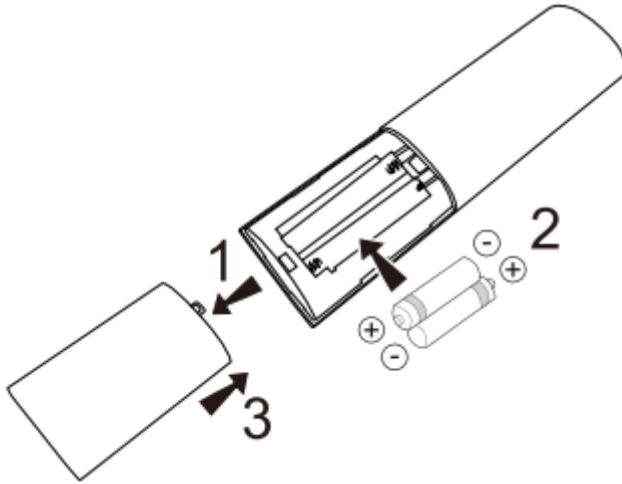
Connect to USB output devices such as a computer via this port for data transmission and power supply to the DX1 II.



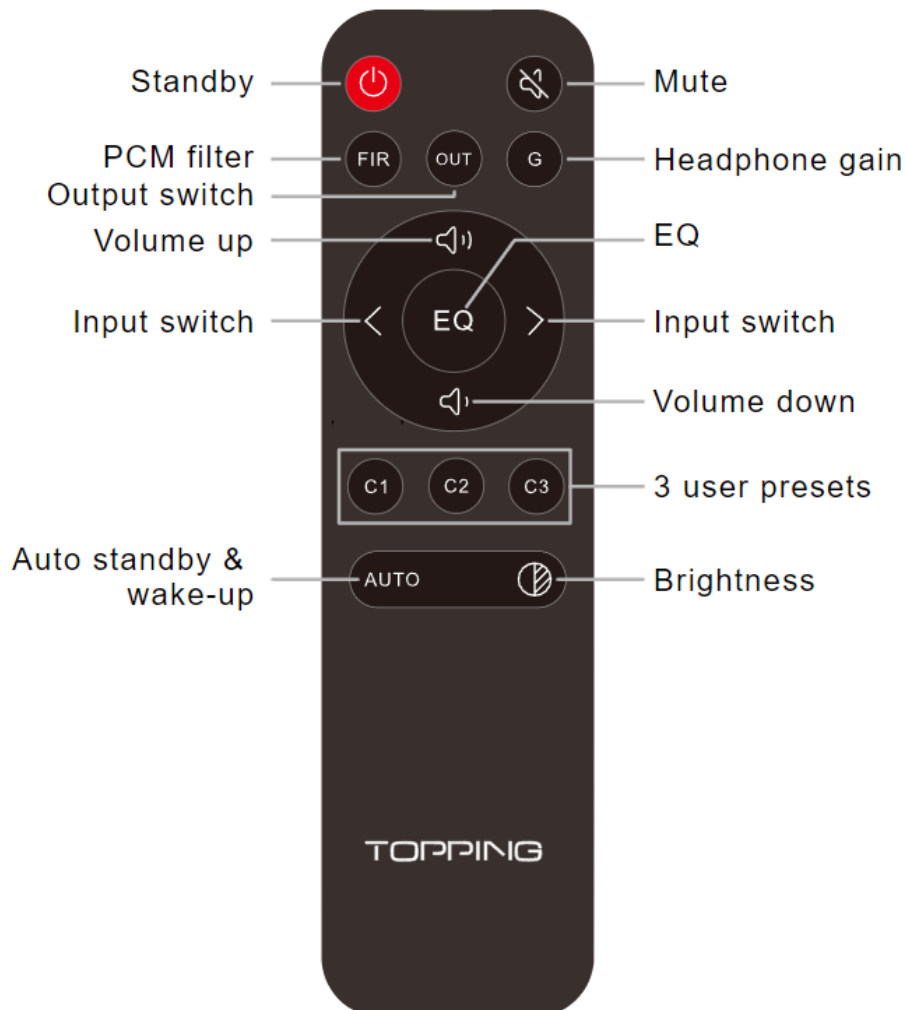
2.4 Remote control

Install remote control battery

Before using the remote control, install two AAA batteries (not included).



Remote control overview



C1, C2, C3 buttons

- **Operation:** Press and hold the C1/C2/C3 button for 3 seconds to save the current settings. Press the C1/C2/C3 button to recall the corresponding settings.
- **Saved settings:** Input channel, output channel, volume, and EQ selection
- **Description:** This function is suitable for users with more than one usage scenario. For example, the two scenarios below. Under different usage scenarios, the DX1 II will have different settings. When switching from Scenario 1 to Scenario 2, multiple settings need to be changed. In this case, you can use the C1 and C2 buttons to save the settings for each scenario. When switching to Scenario 2, simply press the C2 button to recall all settings instantly, without changing them one by one.

	SCENARIO 1: HEADPHONE USE	SCENARIO 2: SPEAKER USE
INPUT CHANNEL	USB IN	OPT IN
OUTPUT CHANNEL	Headphone Out	Line Out
VOLUME	-30dB	0dB
EQ	EQ1	Off

AUTO button

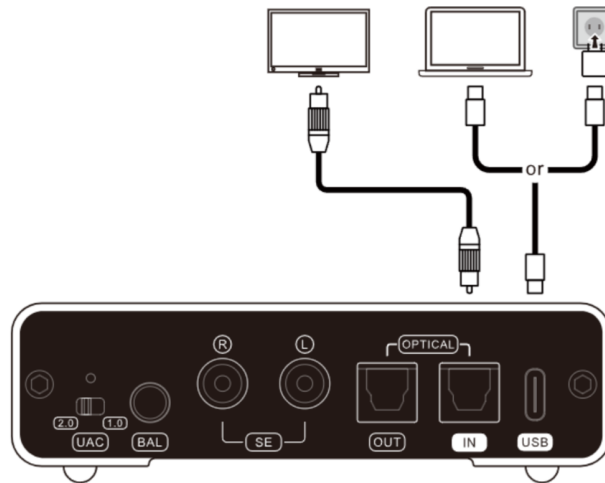
See “5. Setup Menu - Auto standby & wake-up” for details.

3. Connection

3.1 Connect input source and power

USB input: This port handles both data transmission and power supply for the DX1 II. Simply connect your computer to this port using a USB cable — the device will power on automatically and be ready for use.

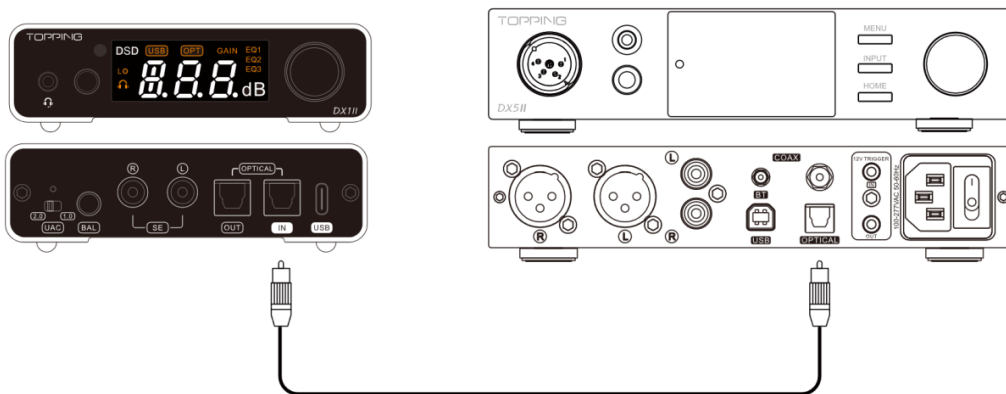
Optical input: Used for connecting optical signal sources. When using this input, the device still requires a DC 5V power supply via the USB port.



3.2 Optical output

The DX1 II also features an optical output, allowing connection to external devices such as DACs.

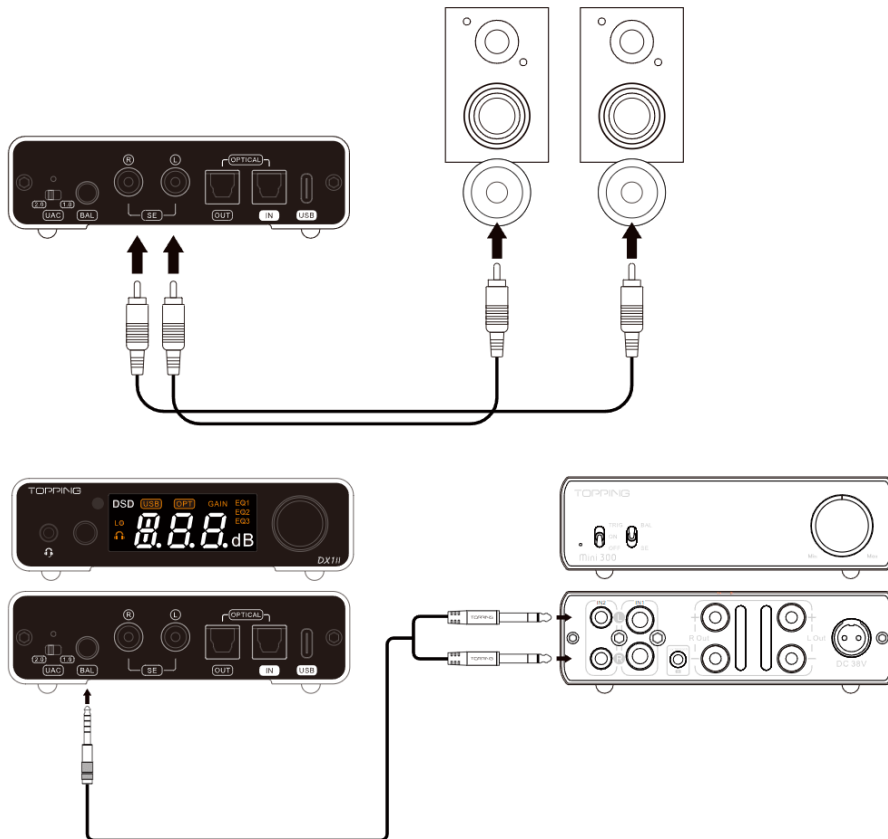
Note: The optical output volume is fixed at maximum by default and cannot be adjusted. Before connection or playback, please lower the volume of other devices first. To adjust the optical output volume, refer to “5. Settings Menu” below and set the optical output volume mode to “OPT U-2.”



3.3 Connect to a power amplifier or active speakers

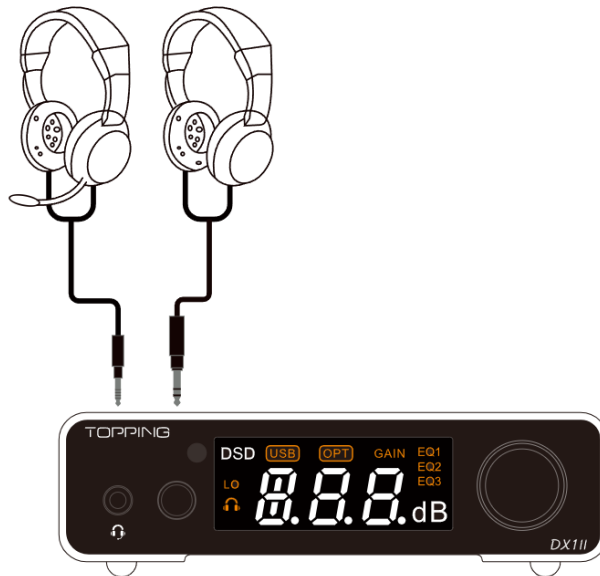
You can connect the DX1 II via its RCA single-ended output or 4.4mm balanced stereo output.

To prevent potential damage, please ensure the power amplifier or active speakers are turned off before making connections.



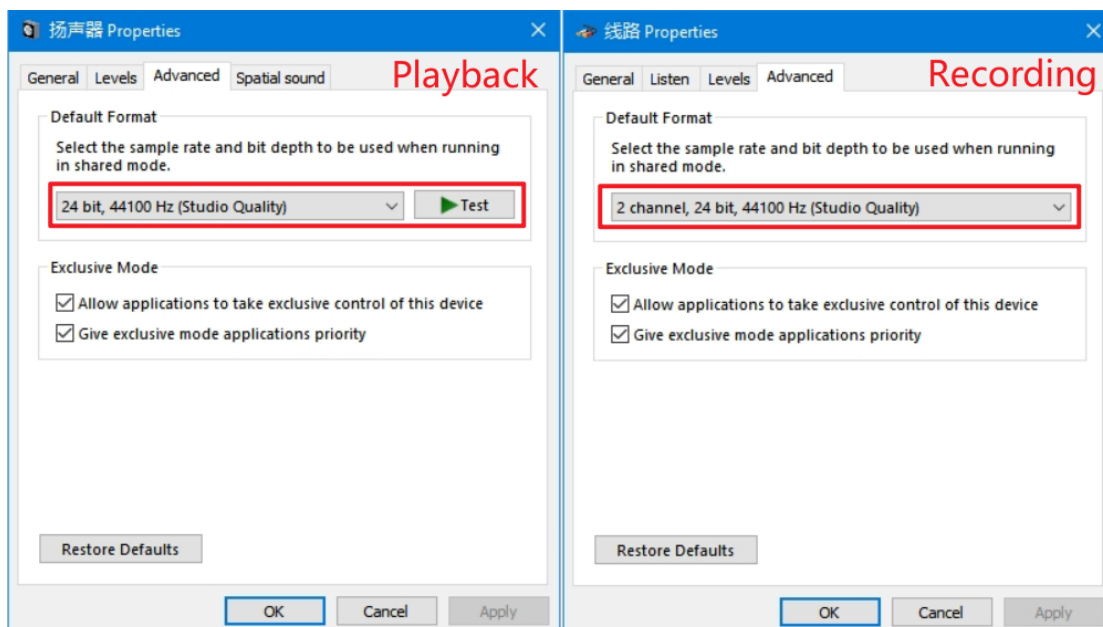
3.4 Connect headphones / headset

Supports both 3.5 mm and 4.4 mm headphone jacks. The 3.5 mm jack is compatible with CTIA headsets, and microphone input supports sampling rates of up to 192 kHz.



Notes:

- The microphone volume can be adjusted in your computer's system volume settings or through the Topping driver.
- Microphone input supports a maximum sampling rate of 192 kHz.
- In your computer's system audio settings, make sure the recording and playback sample rates for the DX1 II are set to the same value.



Headset usage video tutorial:

<https://www.toppingaudio.com/zh/supports?search=DX1+II&tab=video-tutorial>

4. Operation

4.1 Power on / standby

- **Power on**

The device enters working state automatically once powered on.

- **Standby**

While the device is operating, press and hold the front panel knob to enter standby mode. When in standby, press the knob once to exit standby. You can also press the standby button on the remote control to enter or exit standby.



Note:

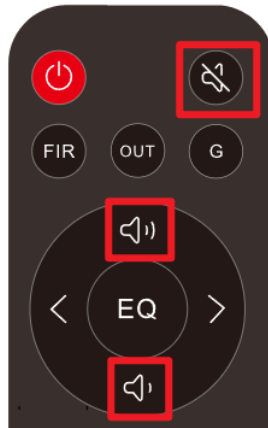
When the auto power on/off function is enabled, if no input is connected or the current input signal is invalid for 1 minute, the DX1 II will automatically enter standby mode.

Once a valid signal is detected from any input, the device will automatically resume normal operation.

4.2 Volume settings

- **Mute**

Press the mute button on the remote control to mute the output of the DX1 II. Press the mute button again or adjust the volume to exit mute mode. In mute mode, the display will alternately flash "---" and the previous volume value.



- **Volume adjustment**

You can adjust the volume using the front panel knob or by pressing the volume + / - buttons on the remote control. Press and hold the volume + / - buttons to adjust the volume quickly. Please operate carefully to protect your hearing.



Note:

- When Line Out is set to DAC mode (-d), the volume is fixed at 0 dB and cannot be adjusted.
- The optical output volume is fixed at maximum by default and is not affected by the volume control. To enable volume adjustment, go to the setup menu and set the optical output volume mode to **OPT U-2**.

4.3 Input selection

When the device is powered on, press the knob once or use the left/right buttons on the remote control to cycle through the input channels (USB / Optical).



4.4 Output selection

When the device is powered on, double-press the knob or press the **OUT** button on the remote control to cycle through the output channels.

- **LO:** Line Out (Rear panel 4.4mm output and RCA output)
- **Headphone icon:** Headphone output (Front panel 3.5mm and 4.4mm headphone outputs)
- **LO and headphone icon lit simultaneously:** Line Out and headphone output at the same time

Note: The optical output is always active and is not affected by this setting.



4.5 Headphone gain

The headphone gain can be switched using the **G** button on the remote control or the front panel knob.

Using the front panel knob:

- Rotate clockwise to switch to high gain
- Rotate counterclockwise to switch to low gain

The GAIN icon on the screen lights up in high gain mode, and remains off in low gain mode.



4.6 How to set DAC mode

When the device connected to the Line Out of the DX1 II has its own volume control, the DX1 II can be switched to **DAC mode**. In this mode, the DX1 II works as a pure DAC, responsible only for converting digital signals into analog signals and then outputting them at a fixed maximum level. In this state, the DAC performance is optimal, and the volume cannot be adjusted.

To enable DAC mode, please refer to the section below. Enter the setup menu, set the output channel to **O-2 (Line Out)**, and set the DAC mode to **-d (DAC mode)**. After the settings are completed, save and exit the menu.

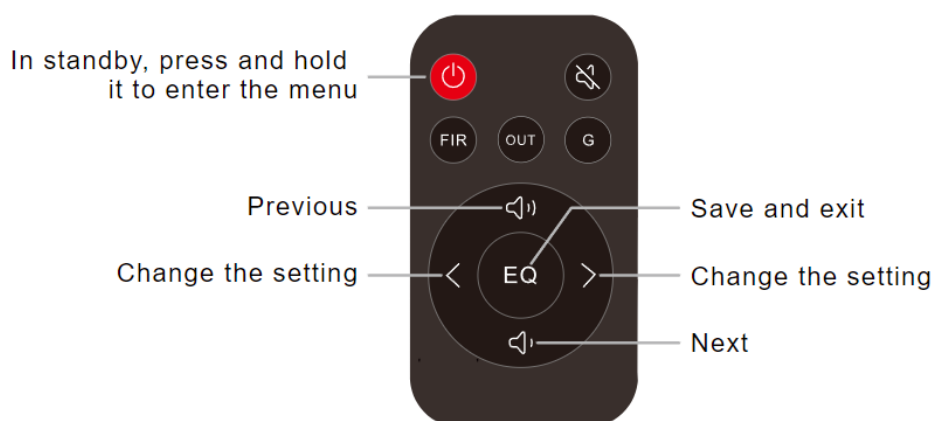
5. Setup menu

Enter menu and adjust settings

Using the front panel knob

- Enter menu: When the device is in standby, press and hold the knob for 3 seconds
- Choose setting item: Rotate the knob
- Change settings: Press the knob
- Save and exit: Press and hold the knob

Using the remote control



5.1 Auto standby & wake-up



- A-O: Enabled (Default)
- A-C: Disabled

When enabled, if no input is connected or the current input signal is invalid for 1 minute, the DX1 II will automatically enter standby mode.

Once a valid signal is detected from any input, the device will automatically resume operation.

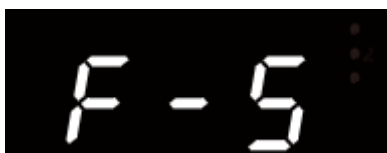
5.2 Brightness



- L-1: Low
- L-2: Medium (Default)
- L-3: High
- L-A: Auto Display Off

The brightness in L-A is the same as Medium. In this mode, the display turns off automatically after 30 seconds of inactivity. Press any button to wake the screen.

5.3 PCM filter



- F-1: Minimum Phase
- F-2: Linear Phase Fast Roll-Off Apodizing
- F-3: Linear Phase Fast Roll-Off
- F-4: Linear Phase Fast Roll-Off Low Ripple
- F-5: Linear Phase Slow Roll-Off (Default)

- F-6: Minimum Phase Fast Roll-Off
- F-7: Minimum Phase Slow Roll-Off
- F-8: Minimum Phase Slow Roll-Off Low Dispersion

5.4 Remote control



- r-O: Enabled (Default)
- r-C: Disabled

5.5 Output selection



- O-1: Headphone output (Front panel 3.5mm and 4.4mm headphone outputs)
- O-2: Line Out (Rear panel 4.4mm output and RCA output)
- O-3: Line Out + Headphone output (Default)

Note: The optical output is always active and is not affected by this setting.

5.6 DAC mode



- -p: Preamp mode (volume adjustable) (Default)
- -d: DAC mode (fixed maximum output, volume not adjustable)

Note: This function is only effective when using Line Out output only.

5.7 Headphone gain



- GAIN OFF: Low gain (Default)
- GAIN ON: High gain

5.8 PEQ selection



- EQ0: PEQ disabled (Default)
- EQ1: Enable EQ1
- EQ2: Enable EQ2
- EQ3: Enable EQ3

The device includes 3 built-in preset configurations. To modify them, please use the **Topping Tune** software.

PEQ supported formats:

USB IN	44.1kHz-192kHz/16bit-32bit
OPT IN	44.1kHz-192kHz/16bit-24bit
OPT OUT	44.1kHz-192kHz/16bit-24bit

5.9 Optical compatibility



- OPT d-1: Mode 1 (Default)
- OPT d-2: Mode 2

This setting improves compatibility with different optical signal sources.

The two modes serve as alternatives — simply select the one that works properly with your device.

Note: Mode 1 does not support DoP64.

5.10 Optical output PEQ Follow



- OPT E-0: Enable PEQ and follow the “PEQ selection” setting (Default)
- OPT E-C: Disable PEQ

5.11 Optical output volume setting



- OPT U-1: Fixed volume (maximum output) (Default)
- OPT U-2: Adjustable volume

6. Factory reset

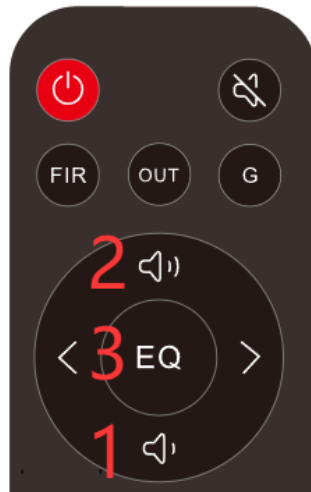
6.1 Reset all settings (excluding PEQ config)

In standby mode, press the **Volume -**, **Volume +**, and **Mute** buttons on the remote control in sequence to restore the factory settings. PEQ configurations will not be reset.



6.2 Reset PEQ config only

In standby mode, press the **Volume -**, **Volume +**, and **EQ** buttons on the remote control in sequence to reset the PEQ configurations.



7. Firmware Upgrade

Click the link below to view the latest firmware, how to check the firmware version, and the firmware upgrade steps: <https://www.toppingaudio.com/supports?search=DX1+II&tab=firmware>

8. Precautions

- Do not keep the unit in a hot, humid environment or hit the unit strongly.
- Opening the case will immediately void the warranty!
- Indoor use only.
- TOPPING is not liable for any loss or damage arising directly or indirectly from the use or failure of the DX1 II.
- For product improvement, specifications are subject to change without prior notice.

9. Trouble shooting

If you encounter any issues during use, you can find the corresponding solutions at the following link: <https://www.toppingaudio.com/supports?search=DX1+II&tab=faq>

If the problem still cannot be resolved, please contact us at: service@toppingaudio.com

10. Attribute

DIMENSIONS	10.0cm x 10.0cm x 3.2cm (Include protruding parts)
WEIGHT	275g
POWER INPUT	USB Type-C (DC 5V / 1.0A)
DIGITAL INPUT	USB/OPT (S/PDIF)
ANALOG INPUT	3.5mm headset input (shared with headphone jack, with 2.5V bias voltage)
DIGITAL OUTPUT	OPT (S/PDIF)
LINE OUTPUT	4.4mm balanced / RCA single-ended
HEADPHONE OUTPUT	3.5mm single-ended headphone jack 4.4mm balanced headphone jack
DISPLAY	LED
UAC	1.0 / 2.0 (switchable)
STANDBY POWER CONSUMPTION	0.8W (typical)
POWER CONSUMPTION	2.5W (typical)

11. Input range

USB IN	PCM	44.1kHz-384kHz/16bit-32bit
	DSD	DSD64-DSD256 (Native) , DSD64-DSD128 (Dop)
	PEQ	44.1kHz-192kHz/16bit-32bit
OPT IN	PCM	44.1kHz-192kHz/16bit-24bit
	DSD	DSD64(Dop)
	PEQ	44.1kHz-192kHz/16bit-24bit
OPT OUT	PCM	44.1kHz-192kHz/16bit-24bit
	PEQ	44.1kHz-192kHz/16bit-24bit

12. Specifications

DAC parameters (Line Out/USB In@96kHz)

OUTPUT	RCA SE	4.4MM BAL
THD+N @1KHZ (A-WT)	<0.00009%	<0.00007%
THD @20-20KHZ (90KBW)	<0.0008%	<0.0005%
SNR @1KHZ (A-WT)	125dB	128dB
DYNAMIC RANGE @1KHZ (A-WT)	125dB	128dB
FREQUENCY RESPONSE	20Hz-20kHz(±0.1dB) 20Hz-40kHz(±0.3dB)	20Hz-20kHz(±0.1dB) 20Hz-40kHz(±0.3dB)
OUTPUT LEVEL	2.4Vrms @0dBFS	5.1Vrms @0dBFS
NOISE (A-WT)	<1.3uVrms	<2.0uVrms
CHANNEL CROSSTALK	-126dB @1kHz	-140dB @1kHz
CHANNEL BALANCE	0.3 dB	0.3 dB
OUTPUT IMPEDANCE	50Ω	100Ω
OUTPUT COUPLING	DC	DC

*Note: All data above was measured by TOPPING Lab under DC 5V power supply.

Headphone Amplifier specifications (USB In@96kHz)

OUTPUT	3.5MM HEADPHONE JACK	4.4MM HEADPHONE JACK
THD+N @1KHZ (A-WT)	<0.0005% @Output=200mW(32Ω) <0.00015% @Output=22mW(300Ω)	<0.0010% @Output=850mW (32Ω) <0.0001% @Output=90mW (300Ω)
THD @20-20KHZ (45KBW)	<0.0020% @Output=200mW(32Ω) <0.0003% @Output=22mW(300Ω)	<0.0050% @Output=850mW(32Ω) <0.0003% @Output=90mW (300Ω)
SNR @MAX OUT 1KHZ (A-WT)	125dB @1kHz	128dB @1kHz
DYNAMIC RANGE @1KHZ (A-WT)	125dB @1kHz	128dB @1kHz
FREQUENCY RESPONSE	20Hz-20kHz(±0.1dB) 20Hz-40kHz(±0.3dB)	20Hz-20kHz(±0.1dB) 20Hz-40kHz(±0.3dB)
OUTPUT LEVEL	2.3Vpp @G=L,11.5Vpp @G=H 0.8Vrms @G=L,4.0Vrms @G=H 0.3dBu @G=L,14.4dBu @G=H	4.6Vpp @G=L,23.0Vpp @G=H 1.6Vrms @G=L,8.1Vrms @G=H 6.3dBu @G=L,20.4dBu @G=H
NOISE (A-WT)	<0.9uVrms @G=L <1.9uVrms @G=H	<1.2uVrms @G=L <3.3uVrms @G=H
CHANNEL CROSSTALK	-102dB @1kHz	-140dB @1kHz
GAIN	G=L -1.6dB(Vrms/FS) G=H 12.4dB(Vrms/FS)	G=L 4.4dB(Vrms/FS) G=H 18.4dB(Vrms/FS)
CHANNEL BALANCE	0.3 dB	0.3 dB
OUTPUT IMPEDANCE	<1Ω	<2Ω
OUTPUT POWER	800mW x 2 @16Ω THD+N<1% 510mW x 2 @32Ω THD+N<1% 260mW x 2 @64Ω THD+N<1% 58mW x 2 @300Ω THD+N<1% 29mW x 2 @600Ω THD+N<1%	730mW x 2 @16Ω THD+N<1% 1000mW x 2 @32Ω THD+N<1% 1000mW x 2 @64Ω THD+N<1% 230mW x 2 @300Ω THD+N<1% 115mW x 2 @600Ω THD+N<1%
LOAD IMPEDANCE	>8Ω	>8Ω

*Note: All data above was measured by TOPPING Lab under DC 5V power supply.